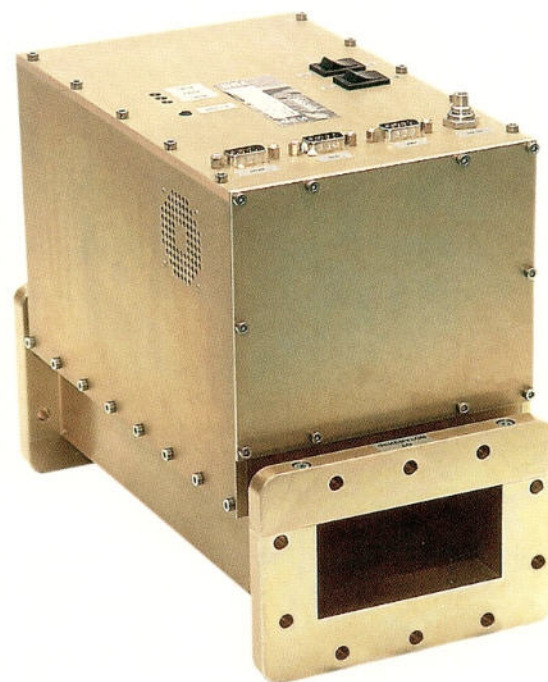


# TRISTAN AUTOMATIC TUNER & IMPEDANCE ANALYZER WG340AT-V

- STAND ALONE TUNING SYSTEM
- HIGH SPEED ACCURATE TUNING
- ON BOARD COMPUTER
- DATA LOGGING OF LOAD IMPEDANCE
- WINDOWS VISUALIZATION SOFTWARE
- RS232 OR CAN INTERFACE

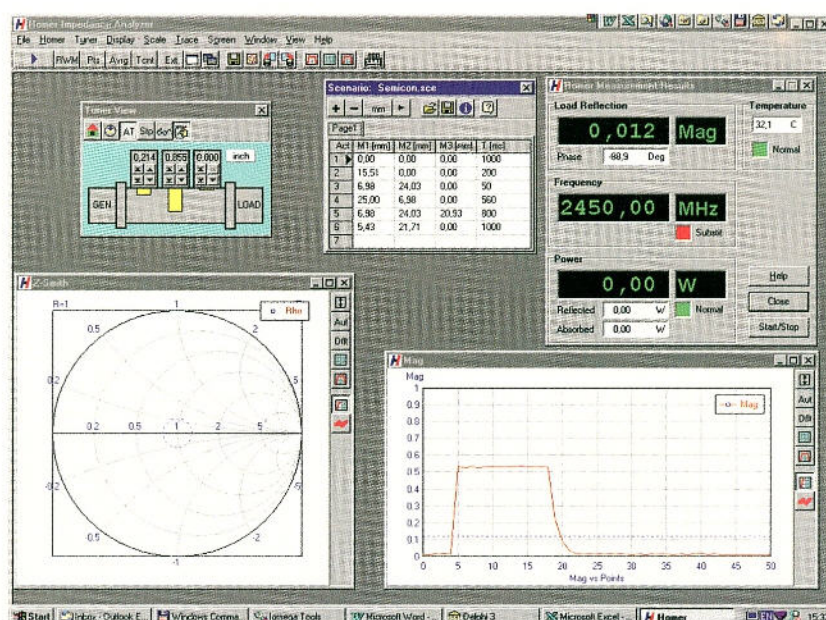


## KEY FEATURES

- FAST, AUTOMATIC IMPEDANCE MATCHING UNDER FULL POWER CONDITIONS
- PRECISE TUNING ALGORITHM BASED ON VECTOR-REFLECTION COEFFICIENT MEASUREMENT
- READOUT OF FORWARD AND REFLECTED POWER, REFLECTION COEFFICIENT (MAGNITUDE & PHASE) STUB POSITIONS ETC. AT FULL POWER
- CONTAINS SINGLE-BOARD COMPUTER FOR DATA ACQUISITION
- EASILY INTEGRATED INTO EXISTING COMPUTER BASED INSTRUMENTATION & MONITORING SYSTEMS
- COMPACT DESIGN

## SPECIFICATIONS

WAVEGUIDE TYPE:	WR340
FLANGE TYPE:	IEC
FREQUENCY RANGE:	2425 - 2475 MHz
MAX FORWARD POWER:	6000W
DYNAMIC RANGE:	20 DB
FORWARD POWER MEASUREMENT ERROR:	+/- 5% W/UNMATCHED LOAD
TUNING RANGE:	VSWR < 10:1
TUNING ACCURACY:	1%
TUNING SPEED:	1 SEC. TYPICAL
INTERFACE:	RS232 OR CAN
AUX. VOLTAGE:	24VDC +/- 10%
POWER LOSS:	< 45W (STUBS MOVING)



LENGTH:	260MM
WIDTH:	138MM
HEIGHT:	226MM
WEIGHT:	6 KG
COOLING INTEGRATED:	AIR
AMBIENT TEMP:	+5°C TO +40°C
STORAGE TEMP:	-10°C TO +75°C